

Open day MSc Nutritional Epidemiology and Public Health (online master)

30 April 2020



What will you get on your plate...



...when you choose the online master?

Public Health



Physiology & RCT

Statistics



Dietary and nutritional assessment

Diseases



Epidemiology

Features of Online master



§ 21-24 h/wk

§ 3-4 year part-time



§ Studying from “home”



§ International Accredited programme

Schedule of Online master

Year 1	2020																	2021																																										
	Sep				Oct					Nov				Dec				Jan				Feb				Mar				Apr				May				Jun				Jul				Aug														
	1	2	3	4	5	6	7	8	9	10	11	12	13	14	15	16	17	18	19	20	21	22	23	24	25	26	27	28	29	30	31	32	33	34	35	36	37	38	39	40	41	42	43	44	45	46	47	48	49	50	51	52								
On-boarding	1					2						3					holidays				4				re-exams				5				6				7				8				9				holidays				re-exams				holidays			
Year 2	2021																	2022																																										
	Sep				Oct					Nov				Dec				Jan				Feb				Mar				Apr				May				Jun				Jul				Aug														
	1	2	3	4	5	6	7	8	9	10	11	12	13	14	15	16	17	18	19	20	21	22	23	24	25	26	27	28	29	30	31	32	33	34	35	36	37	38	39	40	41	42	43	44	45	46	47	48	49	50	51	52								
	10				11					12				13				holidays				14				re-exams				Translation of Theory to Projects				15				16								holidays				re-exams				holidays						
Year 3	2022																	2023																																										
	Sep				Oct					Nov				Dec				Jan				Feb				Mar				Apr				May				Jun				Jul				Aug														
	1	2	3	4	5	6	7	8	9	10	11	12	13	14	15	16	17	18	19	20	21	22	23	24	25	26	27	28	29	30	31	32	33	34	35	36	37	38	39	40	41	42	43	44	45	46	47	48	49	50	51	52								
	MSc Thesis (36 ECTS)																	holidays				cont'd MSc Thesis				Internship (24 ECTS)																	holidays				re-exams				holidays									



Hart voor Brabant



NUTRICIA RESEARCH



Admission requirements

Ü Relevant BSc degree

Nutrition Sciences, Food Science and Nutrition

Biomedical Sciences

Nutrition and Dietetics

Health Sciences with research-focus on metabolism

Ü Average mark 7.0 (= GPA 70+%)

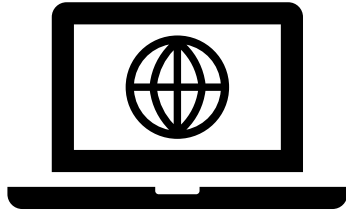
Ü Proficient in English

Apply via Studielink (www.studielink.nl)

Deadlines: 1 July 2020 (EU and non-EU)



Request more information?



wur.EU/OMNH



bvg.mnh@wur.nl



2.00 – 8.30 pm (CEST)



Q&A sessions

4 – 5 pm

7 – 8 pm (CEST)